



Slide 4

Public awareness and perception of seafood offered for sale by such purveyors often does not reflect reality, especially in the case of many flea market operations.



---

---

---

---

---

---

---

---

---

---

Slide 5

The levels of quality and safety controls varies widely among vendors.

Many roadside vendors operate their stands with very high quality and safety standards. These operators are typically located in more affluent areas where customers tend to be more discerning regarding quality and cleanliness.

Many flea market vendors do not achieve the same standards. They often cater to specific ethnic groups where living standards are lower and cultural expectations of quality and safety can be much different than those of average citizens.



---

---

---

---

---

---

---

---

---

---


Slide 6

Outdoor vendors can often be extremely hard to locate and inspect with regularity.

They typically only operate on weekends. Their schedules can be wildly variable, especially for roadside operators.

They may operate in different locations on each day from Friday-Sunday.

They do not typically advertise via traditional means often relying instead on social platforms such as Craigslist or Facebook.



---

---

---

---

---

---

---

---

---

---



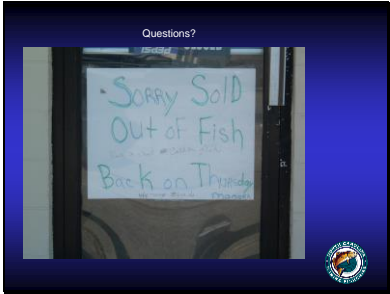








Slide 22



---

---

---

---

---

---

---

---