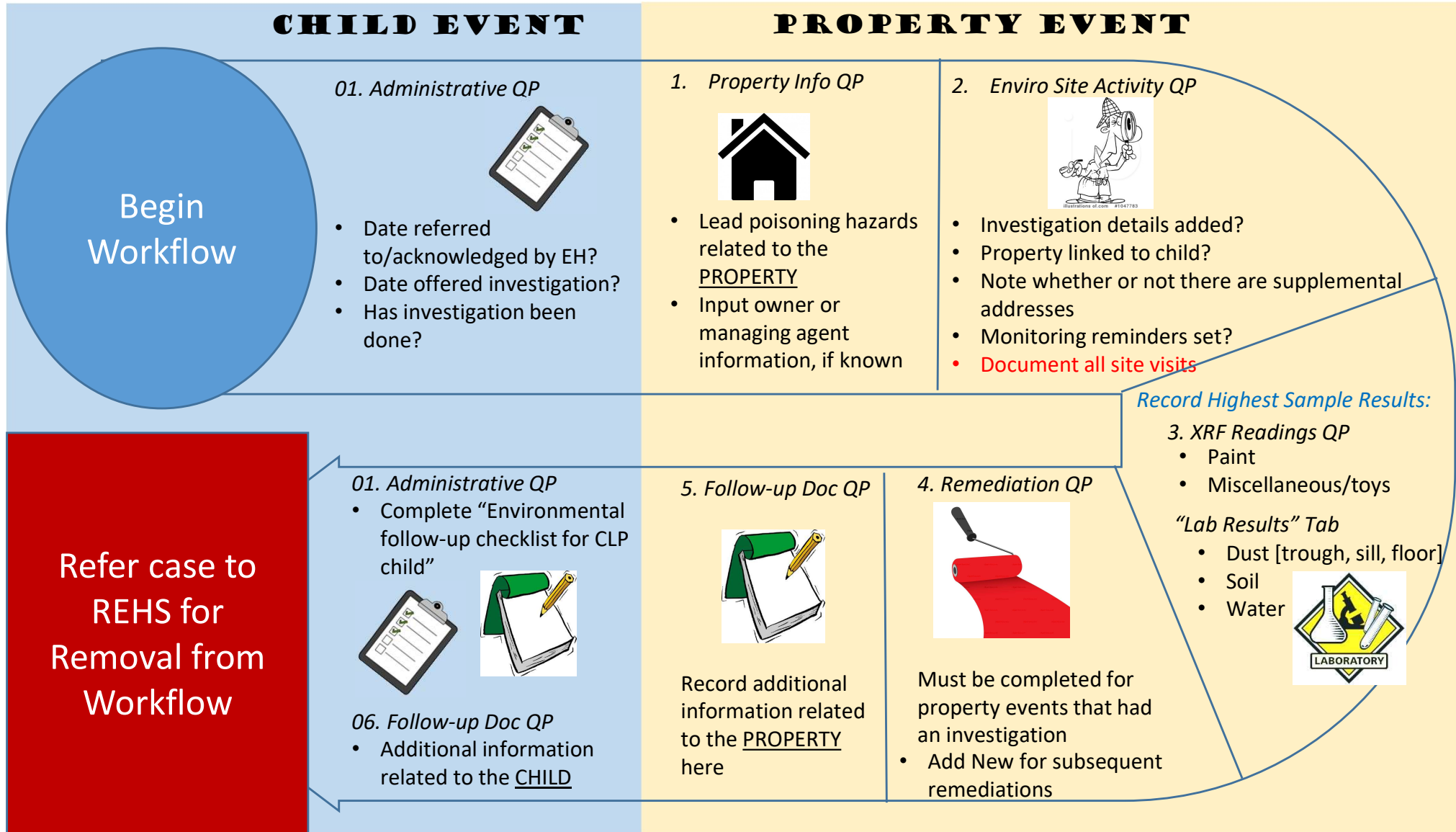


CLP Environmental Follow-up in NCLEAD

Confirmed lead poisoning : Two* consecutive blood lead tests ≥ 10 $\mu\text{g}/\text{dL}$. ****Mandatory investigation of primary and supplemental addresses****



*Note: Two same-day tests are possible. QP=question package

**List supplemental addresses; state if no supplemental addresses meet definition

Updated 10/12/2022